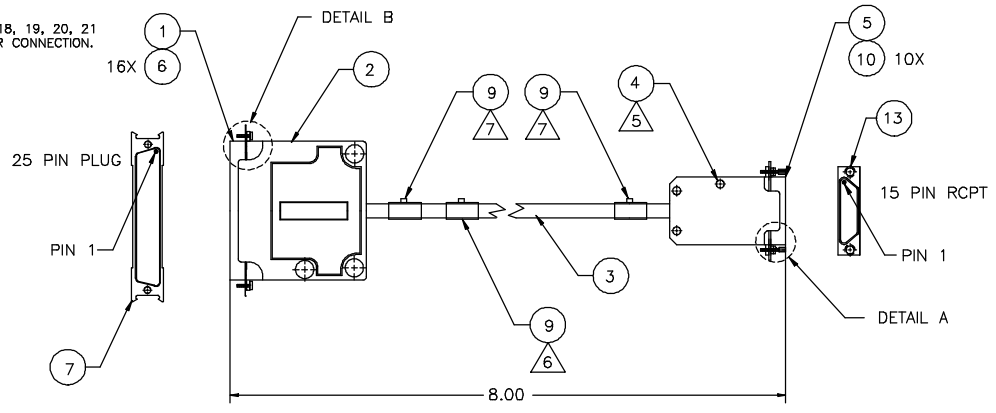


001 96091-0910

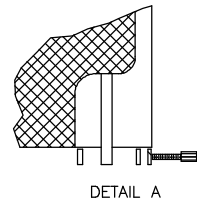
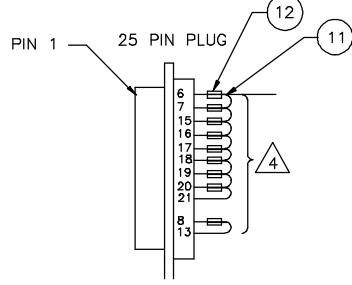
REV	DESCRIPTION	BY	DATE	APR
001	REL PER ECO 262626	BTM	07/28/05	WHR
002	REV PER ECO 261424	BTM	06/15/05	KA

NOTES: UNLESS OTHERWISE SPECIFIED,

1. APPLICABLE STANDARDS/SPECIFICATIONS:
ASME Y14.5M-1994, DIMENSIONING AND TOLERANCING.
ASME Y14.38-1999, ABBREVIATIONS AND ACRONYMS.
APPLIED MATERIALS 0251-05096: INCH/MILLIMETER CONVERSION PROCEDURE
2. SHALL COMPLY WITH PRODUCT EHS REQUIREMENTS PER APPLIED MATERIALS 0250-27105.
3. MANUFACTURE PER APPLIED MATERIALS 0250-09954.
4. DAISY CHAIN REQUIRED FOR CONNECTION OF PINS 6, 7, 15, 16, 17, 18, 19, 20, 21 AND 8, 13. SOLDER AND PLACE .5" LENGTH OF SHRINK TUBING OVER CONNECTION.
5. REMOVE RETAINING SCREWS FROM ITEM 4 AND REPLACE WITH ITEM 13 PER DETAIL .
6. IDENTIFY PER APPLIED MATERIALS 0250-01033, METHOD 3 OR 15. LOCATE APPROXIMATELY WHERE SHOWN.
7. IDENTIFY WITH REFERENCE DESIGNATOR USING INDELIBILE INK. LOCATE APPROXIMATELY WHERE SHOWN.
8. PLACE FIRST LABELS APPROXIMATELY 2.00 FROM CONNECTORS. PLACE FOLLOWING LABELS APPROXIMATELY .25 FROM PREVIOUS LABELS.
9. TEST PER APPLIED MATERIALS 0260-17000.
10. CLEAN PER APPLIED MATERIALS 0250-09720.
11. PACKAGE PER APPLIED MATERIALS 0250-00098.



15 PIN RCPT	25 PIN PLUG	CONDUCTOR COLOR	CONDUCTOR AWG
PIN #	PIN # JUMPER #		
2	2	RED	22
3	3	ORG	22
4	4	YEL	22
5	5	GRN	22
9	13	BLU	22
	13 8	RED	22
11	10	GRY	22
12	23	WHT	22
6	6	BLK	22
	6 7	RED	22
	7 15	RED	22
	15 16	RED	22
	16 17	RED	22
	17 18	RED	22
	18 19	RED	22
	19 20	RED	22
	20 21	RED	22



ITEM #	QTY	DESCRIPTION
NEXT ASSY		APPROVALS DATE
		DRN B. MURPHY 7/28/05
		CHKD W. RUST 8/9/05
		ENGR B. MURPHY 07/28/05
		APPD - -

UNLESS OTHERWISE SPECIFIED:
ALL DIMS IN INCHES. 8 INCLUSIVE
CHAM. APPLIED/PLATED FINISH.
REMOVE BURRS & SHARP EDGES.
DO NOT SCALE DRAWING.

TOL: .000 ±.25 SURFACES
 .0005 ±-
 ANGLES: 2--

DATE: SEE COMPUTER BOM
 FINISH: -

APPLIED MATERIALS CONFIDENTIAL: THIS DOCUMENT AND THE INFORMATION CONTAINED IN IT ARE CONFIDENTIAL AND CANNOT BE COPIED OR DISCLOSED IN WHOLE OR IN PART WITHOUT THE EXPRESS WRITTEN CONSENT OF APPLIED MATERIALS INC.

APPLIED MATERIALS®
 3000 BOWERS AVE., SANTA CLARA, CA 95054
 CABLE, COMM, RF
 SOURCE GEN, APEX 3013
 DT, CENT II

SIZE: Dwg No. 0150-15096 REV 002
 SCALE: - SHEET 1 OF 1

